

# MODOT'S INNOVATIONS CHALLENGE

Tim Chojnacki

Missouri Department of Transportation

Winter Maintenance Peer Exchange

September 24, 2015



# IT'S IN OUR CULTURE

## Live MoDOT's Values

### Be Safe

**Be Safe.** My knowledge, awareness and attitude make me a safe employee.

**What I Do to Be Safe.** I properly use personal protective equipment, procedures, equipment and materials to ensure my safety.

**Where I Do It Safe.** My environment, building and job site are prepared and maintained to ensure my co-workers, partners and I are safe.

**My Customers are Safe.** I consider the impact, timing, awareness, visibility and flow through work areas.

**So We Can Keep Safe.** I share safety information with my team and speak up when I see something to avoid.

## Be Bold

**I Embrace New Ways of Doing Work.** I will be flexible and support changes that help us all get better.

**I Take Risks and Accept Failure.** I will use my failures to identify ways to get better.

**So We Can Be Innovative in Our Pursuit of Excellence.** I will push myself and others around me to not be satisfied with average results.

### Be Better

**Be Better.** I try to improve my results. I continually look for ways to reduce the cost of my work while still delivering quality products and services.

**Improve Myself.** I take advantage of opportunities to build my work skills and knowledge.

**Watch for Ways to Innovate.** I take advantage of new products and technology whenever I can.

**So We Get Better Each Day.** I approach each day as an opportunity to improve.

### Be One Team

**Be One Team.** I am part of Team MoDOT. I recognize and accept my role in the success of the entire organization.

**Partner with Others to Improve What I Do.** I involve my customers and partners to deliver practical solutions.

**So We Become One Team.** Together we can create a great workforce and a great place to work.



Our mission is to provide a world-class transportation experience that delights our customers and promotes a prosperous Missouri.



# PRACTICAL APPLICATION

## Solutions at Work

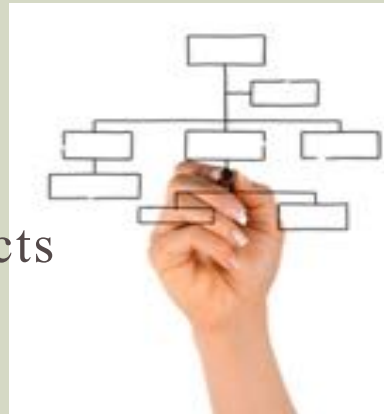
- Best practices rather than ideas
- Must be producing results
- More than 1,000 submissions and 145 best practices approved
- Innovations Challenge created to assemble the top 60 employee innovations in one exhibit hall



# INNOVATIONS CHALLENGE

## Challenge Categories

- Tools and Equipment - Fabricated items getting work done better, faster and safer
- Projects - Efforts resulting in exceptional results for the transportation users or internal operations
- Productivity - Office and field processes, materials and products



# INNOVATIONS CHALLENGE

## Local Competitions Aug-Dec

- Employee submissions evaluated by district evaluation team
- District and Central Office coordinators select the top six district innovations in each category as first-round winners
- As many as 18 first-round winners in each district and the Central Office

**Solutions atWork** **Innovations Challenge**  
Entry Form

Have you or your work group found a way to get work done better, faster and cheaper? Why not let everyone share in the success? Fill out the form below. Your innovation may even qualify for an award and be used throughout the state.

1) Describe your innovation. (Attach photos, videos, presentations, flowcharts and step drawings.)

2) How does MoDOT benefit from your innovation? (Check all that apply.)

Saves money       Saves time       Other

Simplifies work       Improves safety

Describe how:

3) When was your innovation implemented?

4) How much does your innovation cost? (Please attach a complete materials list.)

Total labor hours:  Total material costs:  Recurring costs (if any):

5) Contact Name:  Telephone:

District/Division:  Email:

Please send your completed form and any attachments to your district or division challenge coordinator. Check out the Innovations Challenge intranet page for more details.

**Thanks for helping make MoDOT a world-class organization!**  
Missouri Department of Transportation

# INNOVATIONS CHALLENGE

## Statewide Evaluations Jan-Mar

- All first round winners are evaluated by district and Central Office evaluators to narrow the field to the top 60 for the showcase
- District and Central Office judges evaluate all exhibitors the afternoon prior to the showcase



# INNOVATIONS CHALLENGE

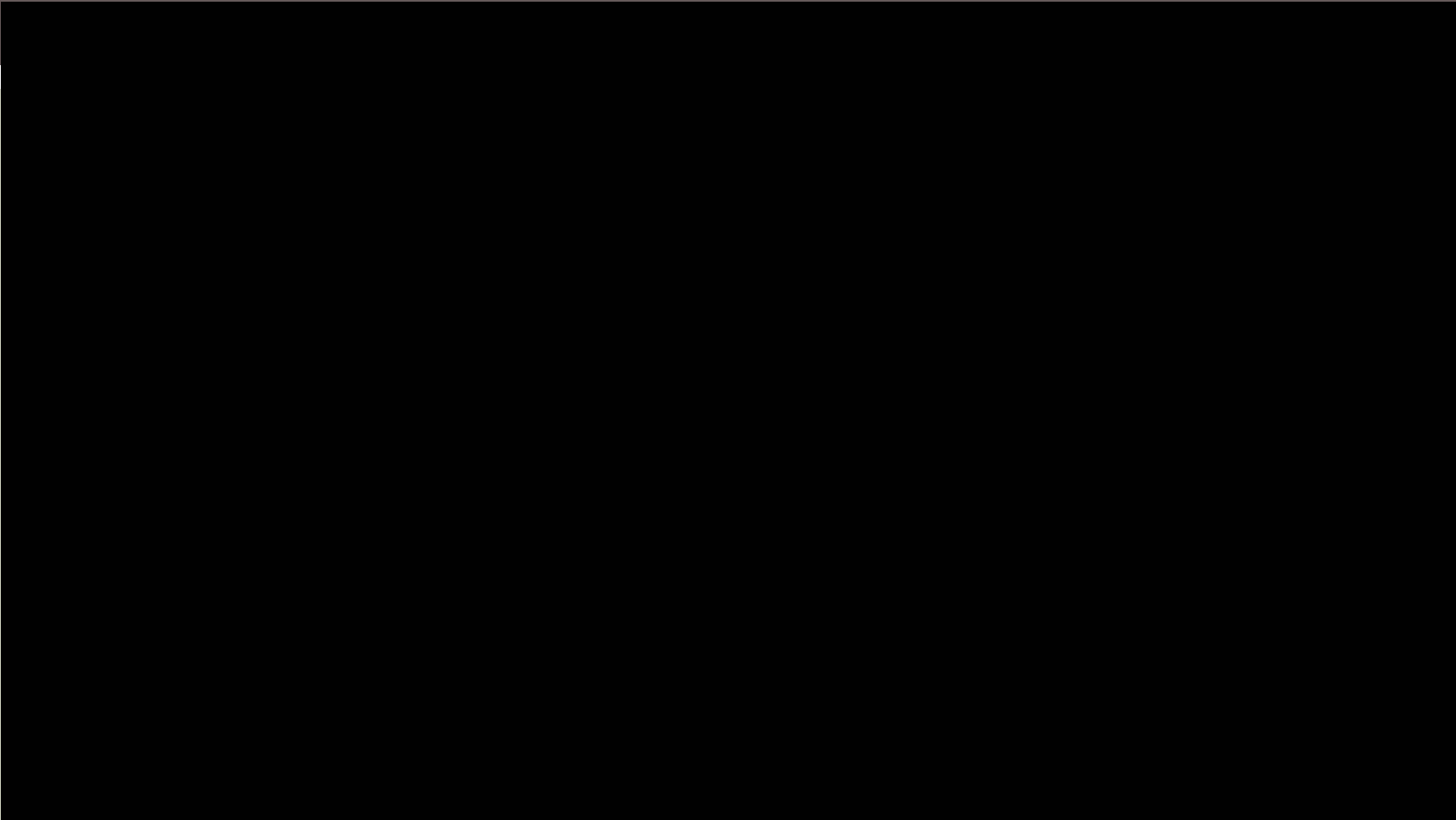
## Innovations Challenge Showcase

April

- Allows employees to see innovations from other areas in one location
- Identifies as many as four showcase winners and two statewide best practices per category
- Director's Safety Award chosen by event judges
- People's Choice Award chosen by everyone attending the showcase







# WINTER MAINTENANCE ITEMS

## Snow Plow stands

- Provide solid footing for storing plows
- Aids in installation and removal
- Stays with plow during operation



# WINTER MAINTENANCE ITEMS

## **Drag chain oiler**

- Adjustable lines for accuracy
- Captures excess material
- Eases lubricating and sealing



# WINTER MAINTENANCE ITEMS

## **Removable Towplow fenders**

- Easily removable
- Allows access for cleaning and preventive maintenance



# WINTER MAINTENANCE ITEMS

## Material Load Indicator

- Provides visual indication to driver of low level
- Improves safety, no climbing on truck



# KEYS TO IMPLEMENTATION

## Leadership

- Provide funding for implementation of key items
- Recognize one size does not fit all

## Field Staff

- Be honest about where you can improve
- Continue to build on past innovations



# THANK YOU

[www.modot.org/innovationschallenge/](http://www.modot.org/innovationschallenge/)

Tim Chojnacki

Missouri Department of Transportation

Tim.Chojnacki@modot.mo.gov

(573) 751-1040