

The logo features a stylized blue 'N' with a downward-pointing arrow integrated into its left vertical stroke. To the right of the 'N', the words 'NEVADA' and 'DOT' are stacked in a bold, italicized, blue sans-serif font.

**NEVADA
DOT**

A solid blue arrow pointing to the right, containing the slogan 'SAFE AND CONNECTED' in white, italicized, sans-serif capital letters.

SAFE AND CONNECTED



National Winter Maintenance Peer Exchange September 23, 2015

Variable Speed Limits and Active Warning Systems



“Am I driving too fast for current conditions?...”



Speed Reduction Techniques



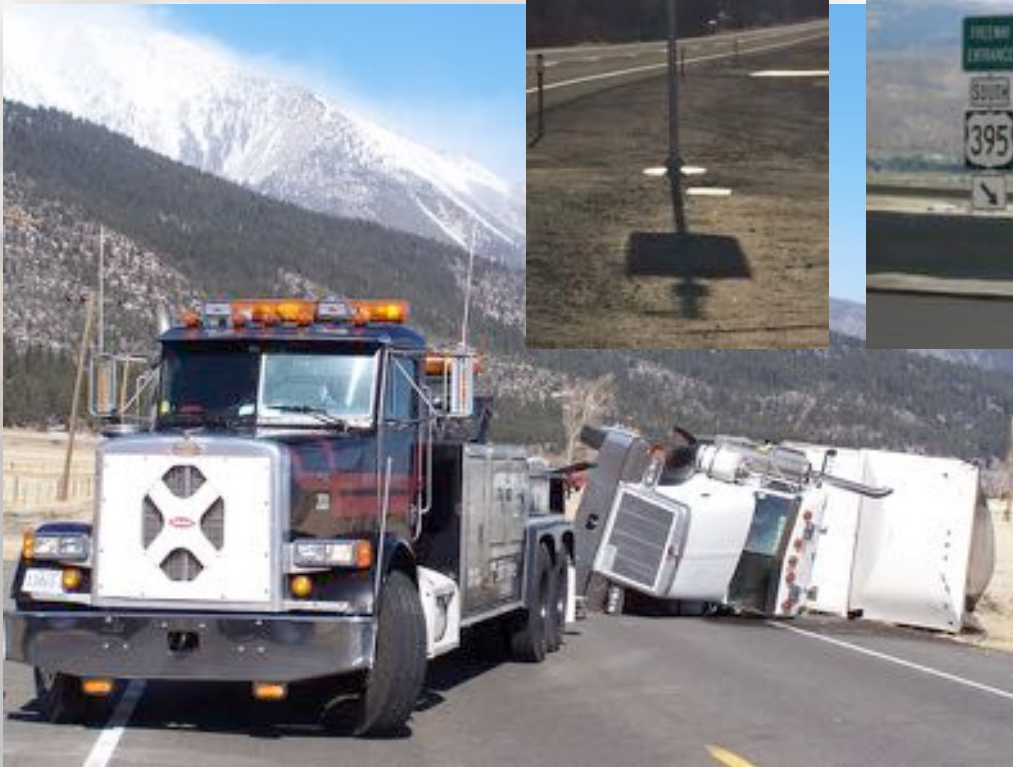


I 580/US 395 Corridor



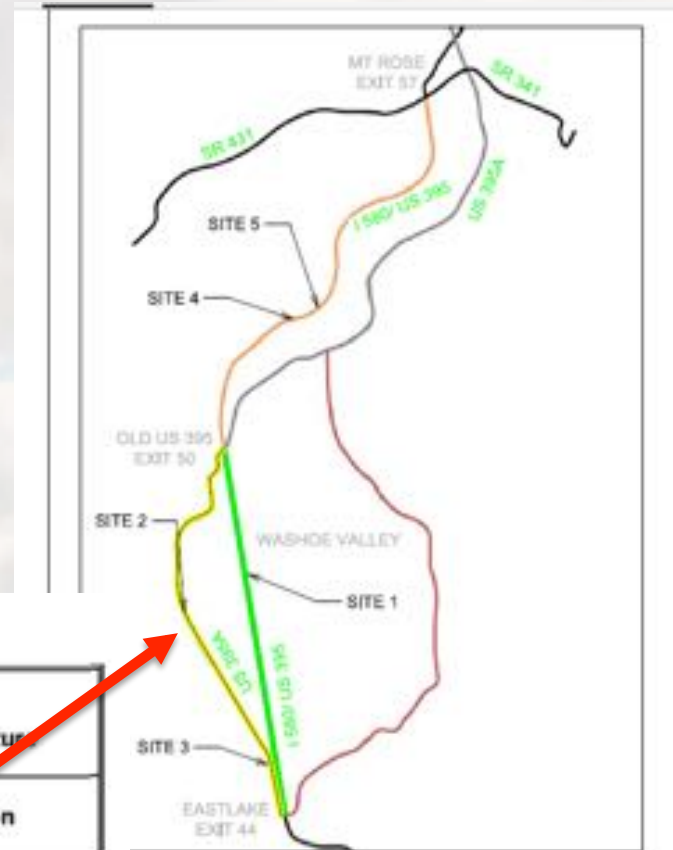


High Profile Vehicle Prohibitions





US 395A Variable Speed Limit



WIND SPEED THRESHOLD MATRIX

I 580 / US-395 (Washoe Valley)		US-395A (Bowers Mansion Rd)		I 580 / US-395 @ Galena Creek Structure	
Wind Speed (MPH)	Action	Wind Speed (MPH)	Action	Wind Speed (MPH)	Action
≤ 30	Monitor	≤ 30	Monitor	≤ 20	Monitor
30 < wind speed ≤ 50	Wind alert	30 < wind speed ≤ 50	Wind alert	20 < wind speed ≤ 40	Wind alert
		35 < wind speed	VSL**		
> 50*	HPV prohibition	> 40	HPV prohibition	> 40	HPV prohibition

* HPV's traveling on I-580/US-395 through the Washoe Valley are restricted to the #1 south bound lane (left lane) and #2 north bound lane (right lane).

** Variable speed limit (VSL) signs on US-395 Alternative will display a speed limit of 45 MPH for all vehicles.



SR 431 Advisory VSL





I 15 Variable Speed Limits





CONTACT INFO:

Denise M. Inda, PE, PTOE
Chief Traffic Operations Engineer
Nevada Dept. of Transportation
775-888-7867

dinda@dot.state.nv.us



NEVADA DOT

SAFE AND CONNECTED



www.nevadadot.com

